



MESSENGER

FIRST UNITED METHODIST CHURCH OF TITUSVILLE

206 S. HOPKINS AVE, TITUSVILLE, FL 32796

JUNE 2025

WE ARE 150 YEARS OLD!

This year, we are celebrating 150 years since the founding of First United Methodist Church.

In 1865 a group of devoted Christians formed this church in the home of Sara and Joseph Gruber on Mendel Lane. Ten years and nine children later, 1875, First Methodist Church was founded as a Mission Circuit by Rev. R. H. Barnett at the request of Bishop Wightman. Our first pastor was Rev. Andrew A. Barnett, nephew of Rev. R. H. Barnett. Pastor photos can be seen on the wall in the office lobby. A list of our pastors is on our [website](#).

\$600 and fund raisers (approx. \$21,000 today) made it possible in 1889 for the first church to be built on the block currently bordered by Garden Street, Palm Avenue, Orange Avenue, and Lemon Avenue. On December 29, 1889, the first services were held in the new church. Photos of the church can be seen in the Archives.

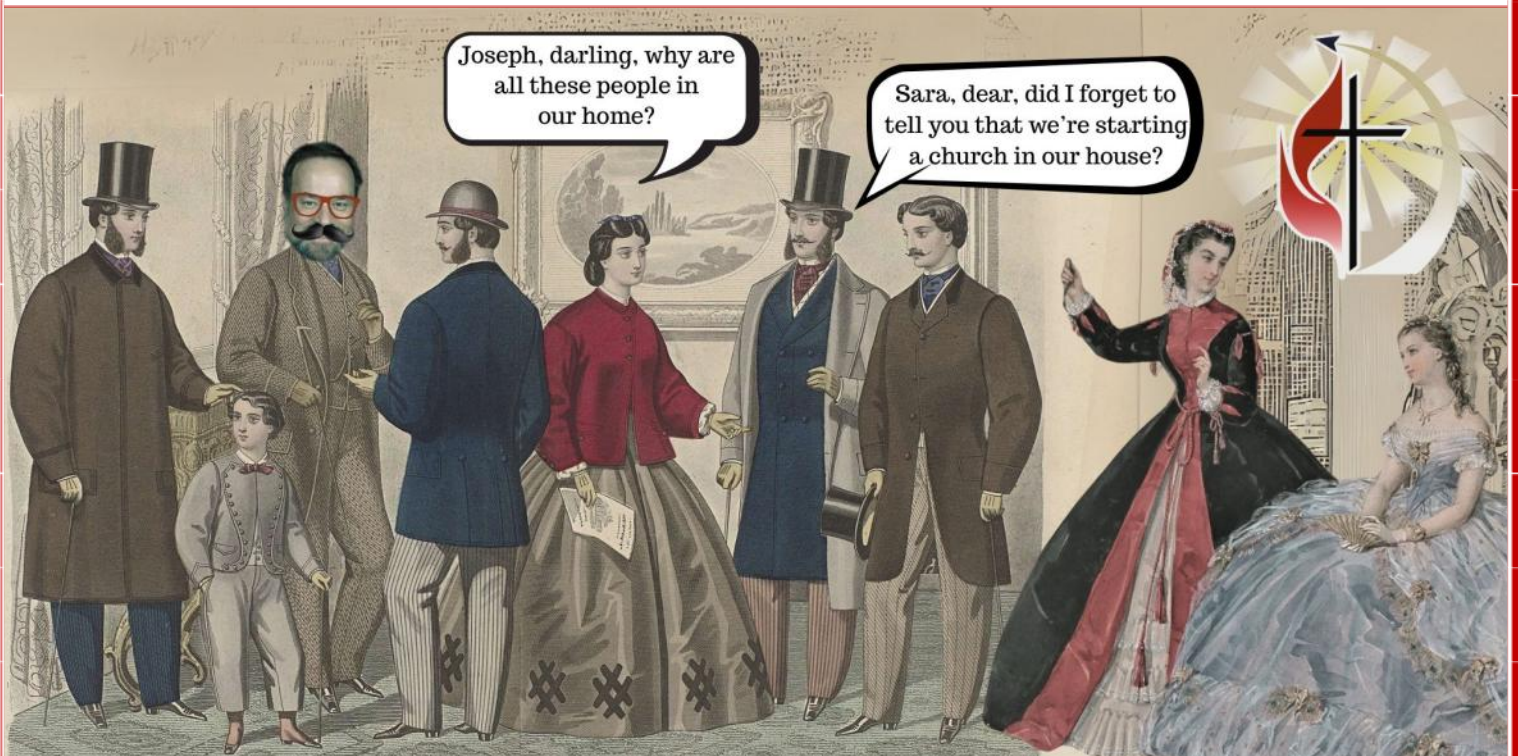
In 1953 the cornerstone for the present Sanctuary was placed and in 1956 the church was completed. To the right as you enter from the Narthex were grand arches with screened doors to allow for summer breezes and light to enter the Sanctuary. Many services were heard with the doors open and chairs filling the courtyard from the overflow of parishioners.

In 1962 First Church commissioned 50 parishioners to start the Indian River City Church and, in 1967, more were sent to start St. Andrews Church.

1968 brought about change when The Methodist Church and The Evangelical United Brethren Church united to become The United Methodist Church.

Our congregation gave from the heart, in contributions, to furnish all that you see before you: the organ and pianos, the choir chairs, baptismal font, communion table, communion rail sections, pulpit, lectern, and much, much more.

This fall, there will be a celebration event! Dates and details will be determined next month, so stay tuned!





METHODIST EPISCOPAL CHURCH, SOUTH, 1875-- . . Palm and Main Sts.,
Titusville, Brevard County.

Constituted 1875, and services, 2 blocks west of present site, until a white, rectangular, wooden structure, with 2 memorial windows, erected 1889, addition of annex, 1890.

First settled pastor, Rev. A.A. Barnett, 1875-1878. Education unknown. Present pastor, Rev. J.E. Jones, 1938--, 209 Palm St., Titusville; Southern College, Lakeland. See, "History of the Church," 1875-1939, by Mrs. J.B. Griffin, May 7, 1939, in Record Book, pastor's study.

QUARTERLY CONFERENCE RECORDS, 1909-- , 6 vols. Showing minutes of quarterly conference meetings; Sunday School records; Epworth League records; financial statements. Custody, pastor, Rev. J.E. Jones, 209 Palm Street, Titusville.

(WOMAN'S MISSIONARY SOCIETY RECORD BOOK, 1906-- , 5 vols. Showing minutes. Custody, Woman's Missionary Society secretary, Mrs. J.E. Koon, 209 Palmetto Street, Titusville.

FIRST UNITED METHODIST CHURCH
OF TITUSVILLE

4th of July

BLOCK PARTY

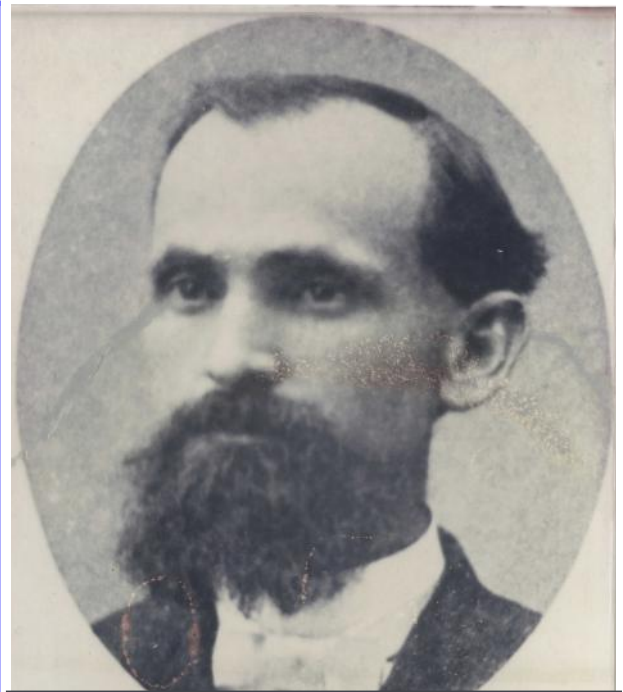
11:00AM - 1:00PM

★

Music - Food
Water Slides - Family - Fun
bring your own towel

213 S PALM AVE, TITUSVILLE FL 32796
WWW.FUMCTITUSVILLE.COM

f



ANDREW A. BARNETT
1875

2025 April Budget Summary

The Finance Committee appreciates your contributions and donations. With your support we will be able to continue sharing God's love with those around us.

| | |
|-----------------------------------|----------------|
| <u>Income</u> | |
| Total Income: | \$34,481 |
| <u>Expenses</u> | |
| Church Programs: | \$1,229 |
| Finance: | \$331 |
| Church Administration: | \$1,134 |
| Facility Maintenance: | \$7,880 |
| Personnel: | \$22,922 |
| <u>Conference Apportionments:</u> | <u>\$3,256</u> |
| Total Expenses: | \$36,752 |

Income Under Expenses: \$2,271

The budget for 2025 is **\$500,000** which, divided evenly, makes each month's goal \$41,667 rather than being weighted differently throughout the year.

Thank you for your loving generosity in keeping this church operating! Only with the generosity of our congregation have we been able to weather the storms of the past and even the storms that will inevitably come.

JUNE ANNIVERSARIES

- 9 Frank & Linda Russell
- 16 Wayne & Janet Cook
- 21 Truman & Barbara Scarborough
- 22 Hudson & Grace Haile
- 23 Mike & Judy Brooks
- 26 Jan & Fay Kikta
- 30 Jake & Debbie Huether

JUNE BIRTHDAYS

- 8 Barbara Ziegler
- 10 Fred Henn
- 12 W.O. Brown
- 15 Ed Grimes
- 16 David Stephens
- 18 Lois Garnett
- 18 Charlotte Rinehart
- 21 Fran Nolan
- 23 Mark Kendrick
- 26 Enis Nathaniel
- 29 Laurilee Thompson



WATER SLIDES?
(at First United Methodist Church)

"I heard there may be a water slide this fall at the 150th Anniversary! Thank goodness we brought appropriate bathing attire!"



A NEW VISION FOR THE UNITED METHODIST CHURCH

Love Boldly
Serve Joyfully
Lead Courageously

Shaped by a profound Wesleyan heritage, the people of The United Methodist Church are stepping in faith into a new season of ministry. Since 2021, the Council of Bishops and the Connectional Table have journeyed together in prayerful collaboration, seeking God's wisdom and discerning a hope-filled vision for this unfolding era in The United Methodist Church.

THE VISION

The United Methodist Church forms disciples of Jesus Christ who, empowered by the Holy Spirit, **love boldly**, **serve joyfully**, and **lead courageously** in local communities and worldwide connections.

LOVE BOLDLY:

We passionately love God and, like Jesus, embrace and include people of every age, nation, race, gender, and walk of life. [Matthew 22:37-39 | John 13:34-35]

SERVE JOYFULLY:

With the heart of Christ, we journey alongside the most vulnerable among us, offering care and compassion with joy. [Psalm 100:1 | Nehemiah 8:10 | John 13:14-15 | 1 Peter 4:10]

LEAD COURAGEOUSLY:

Following Jesus' example, we seek to resist and dismantle all systems of evil, injustice, and oppression, striving for peace, justice, and reconciliation. [Joshua 1:9 | Ephesians 6:10]

In this new season, God is calling United Methodists to embody this vision as we

- Grow and form disciples
- Develop Christ-like leaders
- Stand in solidarity with the poor and the most vulnerable
- Seek health and wholeness for all people and creation

A collaborative effort of the Connectional Table and the Council of Bishops, this new vision statement is the result of a multi-year process of discernment to capture these kernels of truth rooted in scripture and lead the United Methodist Church forward into a hope-filled future.

Learn more about this vision at ResourceUMC.org/Vision.



A NEW VISION FOR THE UNITED METHODIST CHURCH

Love Boldly
Serve Joyfully
Lead Courageously

THE CALL TO ACTION

This renewed vision is more than words—it is an invitation to embrace joy and hope as we live God's mission. It also provides us with a clear, Christ-centered framework for missional unity and collaboration across our worldwide connection.

We encourage the use of the vision statement in its entirety—rather than in parts—to ensure its full theological and missional impact is communicated clearly and consistently.

In the months ahead, the Council of Bishops and the Connectional Table will work with our General Agencies to create resources that inspire and equip pastors, congregations, and church leaders to live into this vision. **These resources will be available at ResourceUMC.org/Vision**

Here are some ways you can use this vision to guide ministry in your church:

○ **Pray:**

Dedicate time to pray and fast for a movement of Holy Spirit in your church as The United Methodist Church embarks on this new season of mission and ministry.

○ **Share the message:**

Use multiple formats to introduce your congregation to the new vision. Resources are coming soon at ResourceUMC.org/Vision.

» Consider a sermon or sermon series, to educate on the theological foundation of the new vision and inspire your congregation to live into it.

» Announce The United Methodist Church's new vision in your bulletin and newsletters.

» Post videos and graphics on your social media. Engage your audience by asking them to share in the comments how your church loves boldly, serves joyfully and leads courageously.

○ **Celebrate your stories:**

Share the creative ways your church is embodying the vision in your community.

○ **Begin to incorporate the new vision** into your church's DNA by using the strategic alignment questions included in this document.

○ **Engage children and youth:**

Be intentional about introducing the vision to younger generations. Create opportunities for children and youth to participate in embodying the vision and to share their unique experiences and stories from their local context.



A NEW VISION FOR THE UNITED METHODIST CHURCH

Love Boldly
Serve Joyfully
Lead Courageously

LOCAL CHURCH LEVEL ALIGNMENT WITH THE NEW VISION

The following strategic questions are designed to help local church leadership teams adapt their strategies to embrace and live into this vision effectively:

Strategic Realignment

1. How can our existing strategies, ministries, and initiatives align more closely with the vision of loving boldly, serving joyfully, and leading courageously?
2. What areas of ministry might need to be reshaped or prioritized to embody this vision?
3. How can we integrate the core tenets of the vision into our church vision statement and guiding principles?

Questions for Strategic Reflection on the New Vision

LOVE BOLDLY:

1. How can our church actively embrace and include individuals from diverse backgrounds in our ministries?
2. What steps can we take to reflect Jesus's bold love in our interactions within the community?
3. How can we break down barriers and create spaces where everyone feels truly welcomed?

SERVE JOYFULLY:

1. Who are the most vulnerable members of our local community, and how can we serve them with joy and compassion?
2. How can we cultivate an environment where serving others becomes a joyful expression of our faith?
3. What partnerships or collaborations could enhance our service to the community?

LEAD COURAGEOUSLY:

1. What are the systems of injustice or oppression we feel called to resist and dismantle in our community?



A NEW VISION FOR THE UNITED METHODIST CHURCH

Love Boldly
Serve Joyfully
Lead Courageously

2. How can we lead courageously in addressing issues of peace, justice, and reconciliation in practical ways?
3. What support or resources do leaders in our church need to embody courageous leadership?

Questions for Action and Implementation of the New Vision

GROWING AND FORMING DISCIPLES:

1. What discipleship programs or initiatives can we develop to deepen spiritual growth in our church?
2. How can we encourage every member to take steps in their personal journey of discipleship?
3. What are creative ways we can engage people of all ages in forming disciples?

DEVELOPING CHRIST-LIKE LEADERS:

1. How can we identify and nurture emerging leaders within our congregation?
2. What training or resources do leaders need to effectively embody this vision?
3. How can leadership practices in our church align more closely with the example set by Jesus?

STANDING IN SOLIDARITY WITH THE POOR AND VULNERABLE:

1. What specific needs exist among the poor and vulnerable in our community, and how can we address them?
2. How can we amplify their voices and advocate for their well-being?
3. What long-term initiatives can we pursue to ensure ongoing support?

SEEKING HEALTH AND WHOLENESS FOR ALL:

1. How can our church contribute to physical, emotional, and spiritual wholeness in our community?
2. What role can we play in caring for creation and promoting environmental health?
3. How can we integrate health and wholeness into our worship, education, and outreach programs?

Joy of singing aids people with Parkinson's

By Jim Patterson

May 28, 2025 | REHOBOTH BEACH, Del. (UM News)

<https://www.umnews.org/en/news/joy-of-singing-aids-parkinsons-sufferers>

Key points:

- † The Parkinson's Education and Support Group of Sussex County Choir recently performed for the second time with a selection of summer songs at Epworth United Methodist Church.
- † Singing is a way people with Parkinson's can stave off progression of the disease.
- † One choir member converted to United Methodism after enjoying her time rehearsing at Epworth.

It's hard to take anything too seriously while listening to 25 adults singing "Itsy Bitsy Teenie Weenie Yellow Polka Dot Bikini."

But as the silly song — a No. 1 hit for Brian Hyland the summer of 1960 — rang out April 10 in the bright, modern sanctuary of Epworth United Methodist Church, the singers marked one more day in their serious fight against Parkinson's disease.

The concert had a beach theme. Other songs performed included "Dock of the Bay," "Sea Cruise," and "Love Letters in the Sand."

"You can't sit in the corner and die," said Rose Verona, a member of the choir. "My name is not 'Parkinson's Rose Verona.' My name is 'Rose Verona,' who happens to have Parkinson's."

"I tell people, 'Do not define yourself by this disease. Fight it.'"

The choir started two years ago when Amanda Peters, president of the board of [the Parkinson's Education and Support Group of Sussex County](#), approached the director of music at Epworth to see if he had any interest in leading a choir of Parkinson's disease patients.

"Speech is part of our exercise bucket because speech is muscle, and one of the ways that you maintain your speech is through the chorus," Peters said. "So we wanted to try and get a chorus started."

Doug Yetter of Epworth already had the church choir, a praise team, and a 100 Voice Community Choir on his plate when he was approached.

"He was very, very interested," Peters said. "He did some research, he looked at his budget of time that he could give, and he came back and he said, 'Yes, I would love to do this.'"



The Parkinson's Education and Support Group of Sussex County Choir performs April 10 at Epworth United Methodist Church in Rehoboth Beach, Del. Doug Yetter (right), director of music at Epworth, accompanies the group on piano. Up to 42 singers practice once a week at the church and concerts are performed three times a year. Photo by Jim Patterson, UM News.

Yetter said he knows the benefits of music therapy firsthand.

"I had performed in theaters for a long time, and then I moved to piano bars and ended up damaging my voice pretty badly," Yetter said. "So the therapy that I had got me more interested in trying to do this."

Nineteen singers showed up at the first meeting in 2023. Now, up to 42 singers practice once a week at Epworth and concerts are performed three times a year. The next concert is set for July 24.

Since Parkinson's is a degenerative neurological condition, those who get it experience many of the same symptoms, but at different paces. Keeping active through singing and other physical activity can hold off the progression significantly.

"Speech will decline when you have Parkinson's," Peters said.

Vocal projection, enunciation, and even the desire to speak are affected.

New Parkinson's patients usually start with [LSVT](#) — Lee Silverman Voice Technique — which has two focuses. First it works to improve motor skills through balance, walking, posture, and strength exercises. The second aspect is improving speech and voice volume by encouraging patients to speak louder and more clearly.

"That's (typically) covered by your insurance," Peters said. "But then there's daily maintenance that you do once the therapy is over."

There are less visible afflictions that happen because of Parkinson's, Verona said.

Harry T. Moore Cultural Center and Museum
Presents

Harboring Hope: The Power of Resilience

Juneteenth Celebration

📅 June 21st, 2025

🕒 11 am - 3 pm

📍 2180 Freedom Ave., Mims, FL 32754

Entertainment, Music,
Food Trucks & Games



For questions please contact us at
(321) 264-6595



(Continued from page 8)

“The most common for everybody that has Parkinson’s is constipation,” she said. Problems swallowing and breathing are also common, as is difficulty walking. And then there’s the most visible Parkinson’s symptom, the tremors and shaking.

“Some of them, they’re shaking so much that they can’t even hold a cup, and then they have to have the [deep brain stimulation](#), and there’s a lot of new things that are coming out,” Verona said.

Deep brain simulation is a surgical procedure where electrodes are implanted in the brain. The electrodes shoot electrical impulses, which has proved helpful treating medical issues such as tremors.

Singing is a much less invasive treatment.

“This is our second presentation that we’ve done,” Peters said. “Everything with Parkinson’s is ongoing maintenance, so this program is designed to be never ending, always reoccurring, so that the projection of voice is not lost.”

The social aspect of choir participation is just as important, she said.

“Parkinson’s will actually affect your desire to participate in life,” Peters said. “All of our programs are group, so, of course, social is a large part of that. Sometimes you pull back from community because it’s overwhelming and it takes more time than you think you can budget.

“So the social aspect of the chorus has been very, very good for our members.”

Jim Holdridge, whose successful business career ended because of Parkinson’s, said singing in the choir helps fill his day and will hopefully slow progression of the disease.

“I just thought I was clumsy, falling,” Holdridge said. “I was tested for that ... and they determined that I had Parkinson’s, coupled with congestive heart failure.

“It is what it is,” he added. “Can’t whine about it.”

For Verona, raised as Catholic, the Parkinson’s choir led



Doug Yetter (left), director of music at Epworth United Methodist Church in Rehoboth Beach, Del., accompanies the Parkinson’s Education and Support Group of Sussex County Choir during its performance April 10 at the church. Keeping active though singing and other physical activity can hold off progression of the disease. Photo by Jim Patterson, UM News.

to her to becoming United Methodist and joining Epworth.

“What I love about Methodism is they walk the talk. They actually do the things I think everyone should do, like getting people fed,” she said. “There’s divas everywhere, and there’s passive-aggressive (people) everywhere, but I see very, very little of it here.”

Music director Yetter gave Verona a Bible, and they started a dialogue.

“I started reading that Bible,” she said.

Soon she had two new families, one based around Parkinson’s and the other her faith. She is one of four Epworth members in the choir.

“I talked with Doug (Yetter) about the people here, and I said, ‘Oh God, I guess you’re telling me this is my home,’ and it is my home. This is my family now.”

Patterson is a UM News reporter in Nashville, Tennessee. Contact him at 615-742-5470 or newsdesk@umnews.org. To read more United Methodist news, [subscribe](#) to the UM News Digest.



SUMMER BIBLE STUDY

Learn to walk more closely with God with the boldness and the zeal of the apostles.

The Acts of the Apostles is a unique and crucial book that chronicles the story of God's grace flooding out to the world through the lives of the apostles in the decades immediately following Christ's ascension into heaven.

In *Acts: Catching up with the Spirit*, author and biblical scholar Matthew Skinner provides a broad yet theologically attuned introduction to this important book and its message of fulfilling the Great Commission.

Skinner explores six key themes that illustrate the ways in which reading Acts is capable of igniting our imagination about the character of the Christian gospel, the work of God's people (the church), and the challenges of living faithfully in a complex and changing world.

Wednesdays at 1:00pm
in the Fellowship Hall

Starting June 11th

Week 1 (6/11): Intro & Ch 1
What God Has Done

Week 2 (6/18): Ch 2
What God Does

Week 3 (6/25): Ch 3
Discernment and Change

Week 4 (7/2): Ch 4
Opposition

Week 5 (7/9): Ch 5
Saints around the Edges

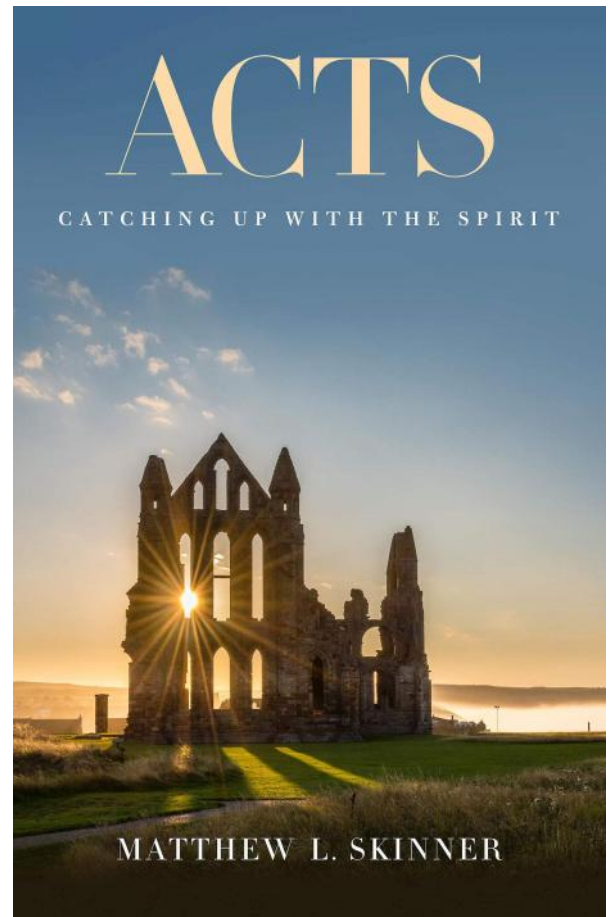
Week 6 (7/16): Ch 6
This Changes Everything & Afterword

Available for purchase:

www.amazon.com

www.christianbook.com

www.cokesbury.com



Congratulations, Graduate!

Ava Isabel Coveney Craig

Graduated May 2025

with a

Titusville High School Degree
&

2-year Eastern Florida State College Degree

Granddaughter of Margaret Coveney and
the late Bernard Coveney

FIRST UNITED METHODIST CHURCH CHILDREN AND YOUTH PROGRAM PRESENTS

DOROTHY *meets* ALICE



The Wizard of Wonderland

A Comedy by Joseph Robinette

July 12th @ 6pm

July 13th @ 3pm

206 S Hopkins Ave Titusville, FL 32796

2025
VACATION BIBLE SCHOOL
VOLUNTEERS
NEEDED
JUNE 23 - 27TH
VOLUNTEER SIGN UP AT THE BACK TABLES
OR AT WWW.FUNCTITUSVILLE.COM

You're invited to a Life Line Screening event!



Where: First United Methodist Church

When: Thursday June 5, 2025

Life Line Screening is the nation's leader in **Stroke and Cardiovascular Disease Risk Screenings.**

Trusted by over 10 million customers.

Screenings are simple and painless. Get peace of mind or early detection.

Who should attend: Anyone over the age of 40

Special Pricing for \$159

- Carotid Artery Disease Screening
- Peripheral Artery Disease Screening
- Atrial Fibrillation Screening
- Abdominal Aortic Aneurysm Screening
- Plus a FREE Hypertension Screening

4 ways to book your appointment...

Scan here:



Call 888-814-0466
and use promo
code: HSCA001

Visit
LLSA.SOCIAL/HSCA

Text the word
"circle" to
216-279-1607

These tests cannot detect all risk factors for all conditions, such as and including the presence of coronary artery disease.

Those with abnormal results should discuss possible next steps with their family healthcare provider and ensure they understand the risk and benefits of any additional testing or procedures.



April 23, 2025

First UMC
206 S Hopkins Ave
Titusville, FL 32796-3560

Dear Rev Wayne Cook,

Along with the Council on Finance and Administration and all ministries supported through your apportionment gifts, I would like to express our appreciation to you and your church members for your hard work and commitment to our shared ministry. We are grateful for your church's dedication to the ministry of The United Methodist Church shown by paying 100% of your allocated apportionments in 2024. Apportionments are your church's share to fund the budgets of The United Methodist Church around the world, the Florida Conference, and your district.

When every local church contributes 100 percent of its apportionments, the entire church is able to meet its many commitments to mission and ministry. To name only a few of these beautiful expressions of God's love, we see churches reaching out to provide needed resources in areas with families facing food insecurity. We see caring United Methodists meeting the needs of older persons through items like food and housing, but also through spending quality time with people reminding them of God's love and care for them. We see The United Methodist Church making a difference in the lives and faith of people every day! With your support of The United Methodist Church through apportioned connectional giving, leaders have been trained, churches have been resourced, clergy have been supported in ministry, outreach beyond the church walls has flourished, and much more. We are grateful for you sharing in ministry and supporting God's work through The United Methodist Church.

While we continue to acknowledge the difficult season we have come through following the pandemic and disaffiliations, we are looking forward with hopeful anticipation to the next season of ministry in The Florida Conference and The United Methodist Church. Florida Conference churches met and rose above the challenges of this season and contributed \$9.6 million in apportionments in 2024. This was not done without sacrifice, and your sacrifice does not go unnoticed.

We look forward to the hopeful future of The Florida Annual Conference and continuing in ministry with you. I hope you will pause in one of your worship services and share this letter with the people who made this 100% support possible. It truly is a sign of the living God at work in your midst. Please share with your church our gratitude and excitement as we move forward together making disciples of Jesus Christ for the transformation of the world!

Sincerely,

Christine Dodson
Interim Treasurer – Florida Annual Conference of The United Methodist Church

Courageous Leadership • Missional Engagement • Spirit-Led Innovation



June 2025

First United Methodist Church




| Sunday | Monday | Tuesday | Wednesday | Thursday | Friday | Saturday |
|--|--|--|---|---|---|---|
| 1 9:00am Sunday School 10:00am Worship 11am Cel. of Life Rec. for Jeanne Mays 3pm Children's Play Auditions | 2 —Camp Real Life— 6pm Broadstreet Rehearsal 6pm Children's Play Auditions | 3 —Camp Real Life— 7:15am Rotary Club Meeting 6:30pm Soliloquy Rehearsal | 4 —Camp Real Life— 9:00am Patchwork Friends 3:30pm Silver Chimes Reh. 4:30pm Chancel Choir Reh. | 5 —Camp Real Life— 8am Lifeline Screening 10:00am Ladies Day Out | 6 —Camp Real Life— 1-3pm Food Pantry | 7 7:30am Garden Club 8:00am Comm. Breakfast |
| 8 Pentecost 9:00am Sunday School 10:00am Worship  | 9 10:00am Sara Fernandez Bible Study 6pm Broadstreet Rehearsal | 10 7:15am Rotary Club Meeting 6:30pm Soliloquy Rehearsal | 11 9:30am Kids Playtime 1:00pm Bible Study: Acts 3:30pm Silver Chimes Reh. 4:30pm Chancel Choir Reh. | 12 | 13 1-3pm Food Pantry | 14 8:00am Comm. Breakfast |
| 15 Father's Day 9:00am Sunday School 10:00am Worship  | 16 6pm Broadstreet Rehearsal | 17 7:15am Rotary Club Meeting 6:00pm Children's Play Rehearsal 6:30pm Soliloquy Rehearsal | 18 3:30pm Silver Chimes Reh. 1:00pm Bible Study: Acts 4:30pm Chancel Choir Reh. 6:00pm Children's Play Rehearsal | 19 12:00pm Ladies Day Out 4:00pm Leadership Team Mtg 6:00pm Children's Play Rehearsal | 20 1-3pm Food Pantry | 21 8:00am Comm. Breakfast 10:00am Moonlight Quilters |
| 22 9:00am Sunday School 10:00am Worship 11am Child Protection Training | 23 9am–12pm VBS 6pm Broadstreet Rehearsal | 24 7:15am Rotary Club Meeting 9am–12pm VBS 5:30pm Moonlight Quilters 6:00pm Children's Play Rehearsal 6:30pm Soliloquy Rehearsal | 25 9am–12pm VBS 1:00pm Bible Study: Acts 3:30pm Silver Chimes Reh. 4:30pm Chancel Choir Reh. 6:00pm Children's Play Rehearsal | 26 9am–12pm VBS 6:00pm Children's Play Rehearsal | 27 9am–12pm VBS 1-3pm Food Pantry | 28 8:00am Comm. Breakfast |
| 29 9:00am Sunday School 10:00am Worship 11am Retirement Reception for Carol Henn | 30 6pm Broadstreet Rehearsal |  | | | | |

TABLE OF CONTENTS

- [Page One](#) — We are 150 years old!
- [Page Two](#) — Historic Document / July 4th Block Party
- [Page Three](#) — Budget Summary / Birthdays / Anniversaries
- [Page Four](#) — A New Vision for the United Methodist Church
- [Page Eight](#) — Joy of singing aids people with Parkinson's
- [Page Nine](#) — Juneteenth Celebration
- [Page Eleven](#) — Summer Bible Study / Graduate Announcement
- [Page Twelve](#) — 2025 Summer Children's Programs
- [Page Thirteen](#) — Lifeline Screening
- [Page Fourteen](#) — Letter from the UM Treasurer
- [Page Fifteen](#) — June Calendar
- [Page Sixteen](#) — Table of Contents / Church Info



FUMC Staff

| | |
|--|----------|
| Reception Desk | Ext 201 |
| Rev. Wayne Cook - Pastor | Ext 202 |
| Mario Davis - Administrative Assistant | Ext 203 |
| Glenda Waring - Membership Secretary | Ext. 204 |
| Leah Patterson - Finance Secretary | Ext. 204 |
| Lauren Good - Family Ministries | Ext. 205 |
| Tom Mosier - Facilities Manager | Ext. 206 |
| Leah Patterson - Custodian | Ext. 206 |
| Carol Henn - Music Director | |
| J.D. Daniel - Organist | |
| Steve Rossi - Sound Tech | |
| Josh Henn - Lights and Visuals | |

1st UMC Ministries

OUTREACH

| | |
|---|---|
| Bags of Grace | Patchwork Friends |
| Christmas Store | <i>(Quilting group providing quilts to the community)</i> |
| Community Breakfast | School Outreach |
| Community Garden | <i>(Apollo Elem., Madison MS, Andrew Jackson MS, Astronaut HS, & Titusville HS)</i> |
| Cuba Missions | Stop Gap Community |
| <i>(Santa Cruz Methodist Church in Holguin, Cuba)</i> | Dinners |
| Food Pantry | Shoe Ministry |
| Good Shepherd | Undue Medical Debt |
| <i>(Funds to help the community with bills & other needs)</i> | |

MUSIC MINISTRIES

| | |
|-------------------|------------------|
| Church Choir | Holiday Cantatas |
| Evensong Services | Special Concerts |
| Handbell Choirs | |

FAMILY MINISTRIES

| | |
|---|--------------------------------|
| 1st Wednesday Dinners | Theater Programs |
| Children's Ministry | <i>(Children & Adult)</i> |
| Street Festivals | Vacation Bible School |
| Open Play | Youth—Longest Day of Your Life |
| <i>(1st Monday, safe playtime for parents & kids)</i> | Youth Ministry |
| Rock the Universe | Bus Ministry |
| Summer Youth Camp | |

NURTURE MINISTRIES

| | |
|-----------------------|---------------|
| United Women of Faith | Bible Studies |
|-----------------------|---------------|

First United Methodist Church

206 S. Hopkins Ave
Titusville, FL 32796

Sunday School: 9:00 a.m.

Worship Services: 10:00 a.m.

Church Office Hours: 8am – 4pm, Monday - Friday
Closed from 12:00 – 12:30 p.m.

Phone: (321) 269-7631

Fax: (321) 269-8359

E-mail Address: office@fumctitusville.com

Website: www.fumctitusville.com

Facebook: www.facebook.com/682694095204027

Instagram Handle: [@UnitedChurch321](https://www.instagram.com/UnitedChurch321)

YouTube: <https://www.youtube.com/channel/UChscOcLDe-wGkXHftvzGX9Q>

[UChscOcLDe-wGkXHftvzGX9Q](https://www.youtube.com/channel/UChscOcLDe-wGkXHftvzGX9Q)

